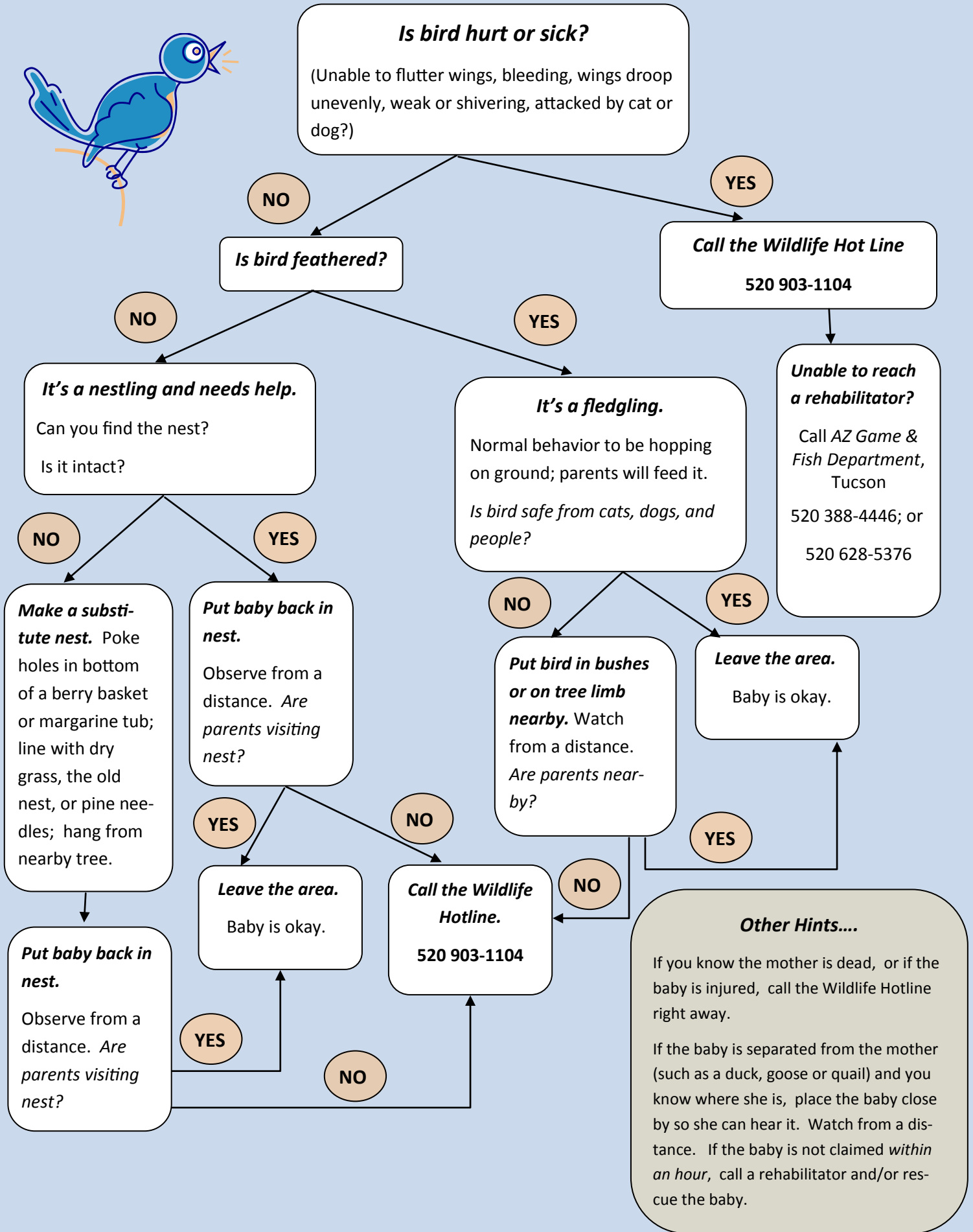
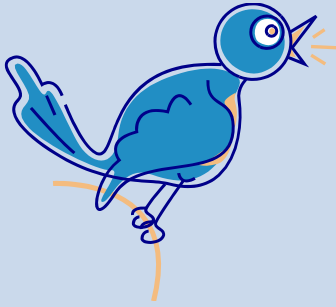


# I Found a Baby Bird... *Now What?*



**Is bird hurt or sick?**  
(Unable to flutter wings, bleeding, wings droop unevenly, weak or shivering, attacked by cat or dog?)

**Is bird feathered?**

**It's a nestling and needs help.**  
Can you find the nest?  
Is it intact?

**It's a fledgling.**  
Normal behavior to be hopping on ground; parents will feed it.  
*Is bird safe from cats, dogs, and people?*

**Call the Wildlife Hot Line**  
520 903-1104

**Unable to reach a rehabilitator?**  
Call AZ Game & Fish Department, Tucson  
520 388-4446; or  
520 628-5376

**Make a substitute nest.** Poke holes in bottom of a berry basket or margarine tub; line with dry grass, the old nest, or pine needles; hang from nearby tree.

**Put baby back in nest.**  
Observe from a distance. *Are parents visiting nest?*

**Put bird in bushes or on tree limb nearby.** Watch from a distance. *Are parents nearby?*

**Leave the area.**  
Baby is okay.

**Put baby back in nest.**  
Observe from a distance. *Are parents visiting nest?*

**Leave the area.**  
Baby is okay.

**Call the Wildlife Hotline.**  
520 903-1104

**Other Hints....**  
If you know the mother is dead, or if the baby is injured, call the Wildlife Hotline right away.  
If the baby is separated from the mother (such as a duck, goose or quail) and you know where she is, place the baby close by so she can hear it. Watch from a distance. If the baby is not claimed *within an hour*, call a rehabilitator and/or rescue the baby.